

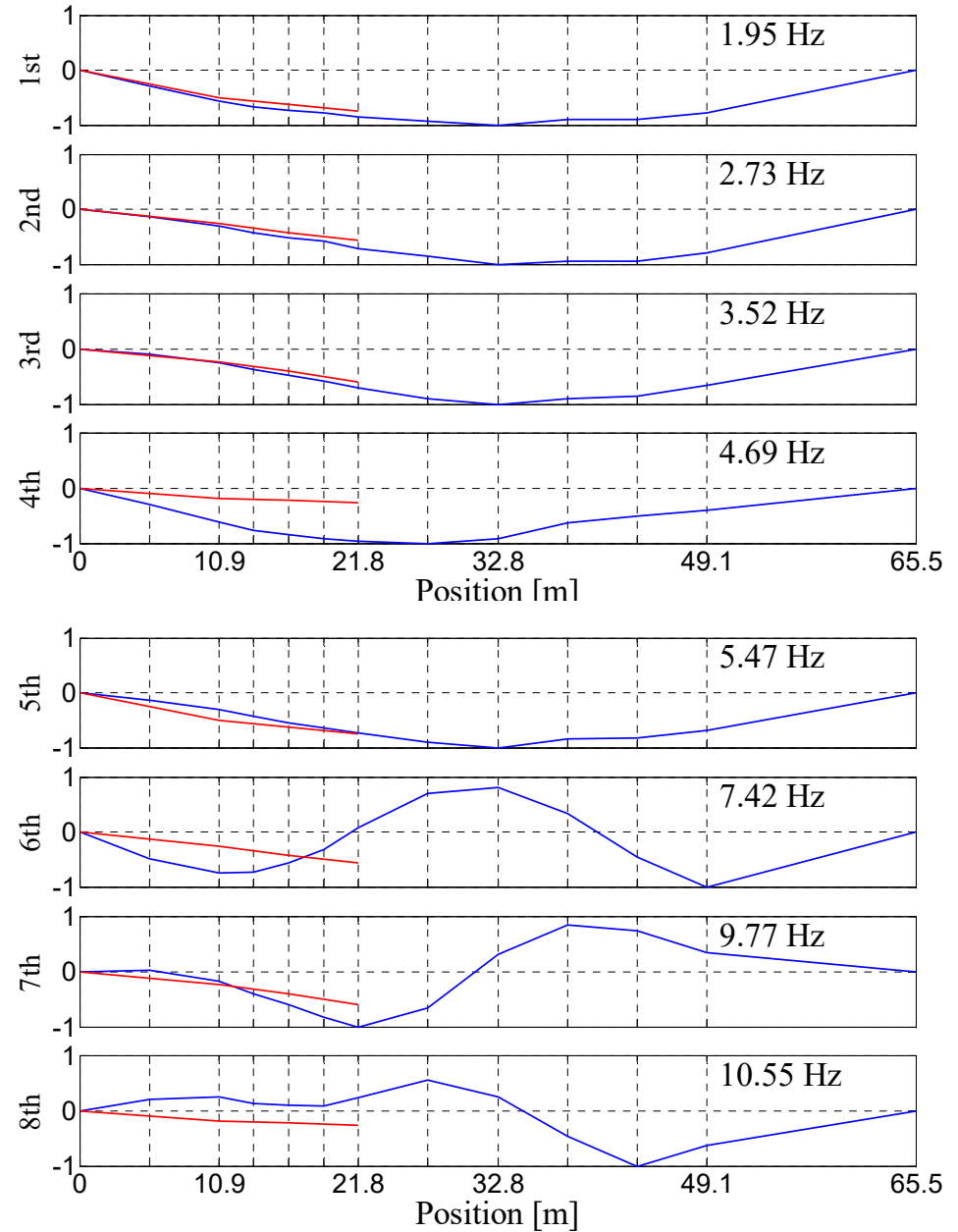
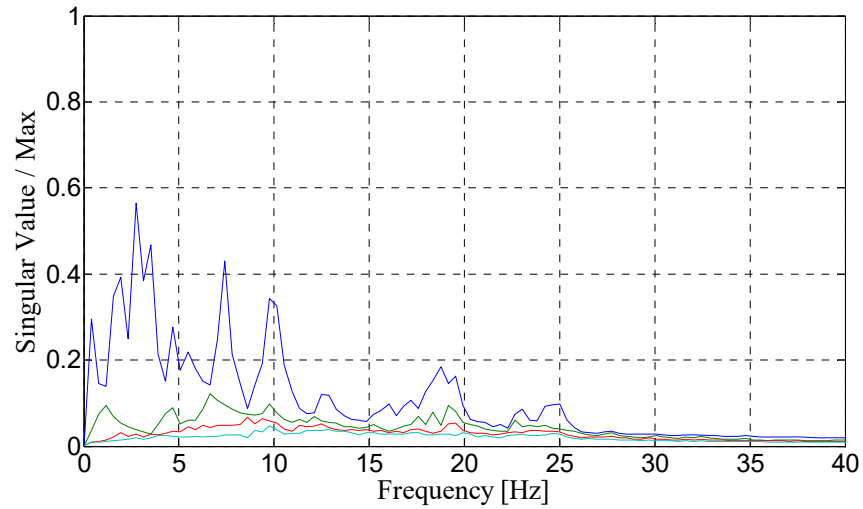
FDDによるモード形状計算結果

Mode Shapes of Torigai Bridge estimated by FDD

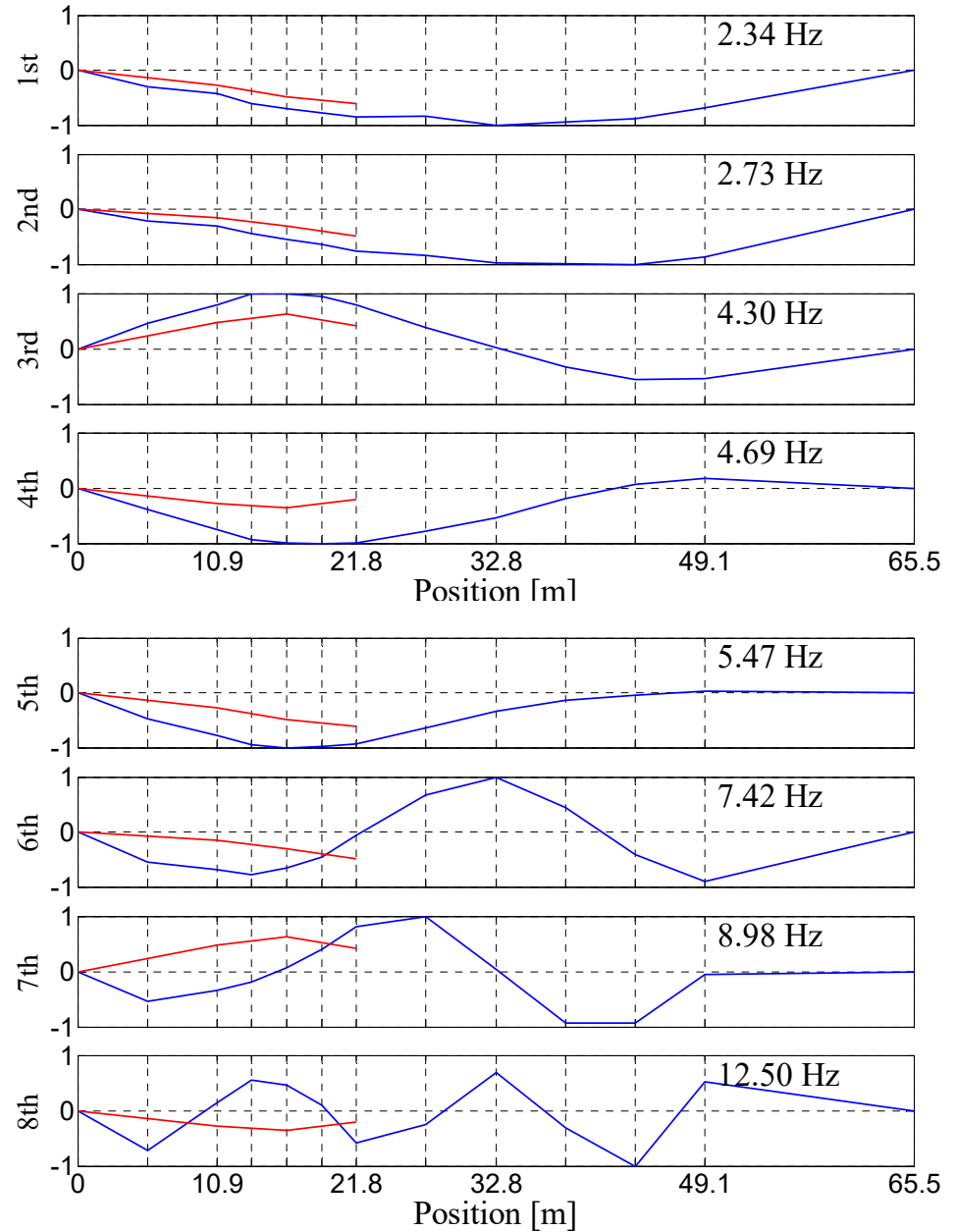
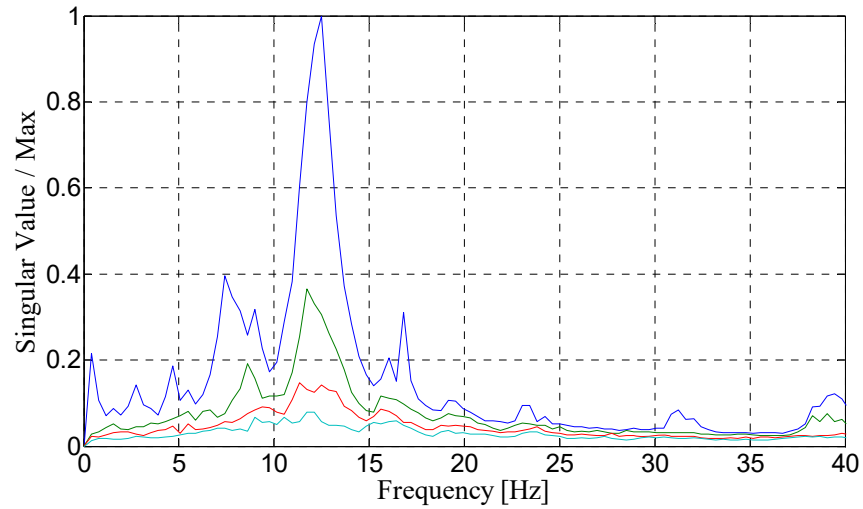
2011/09/15

D3 山本亨輔

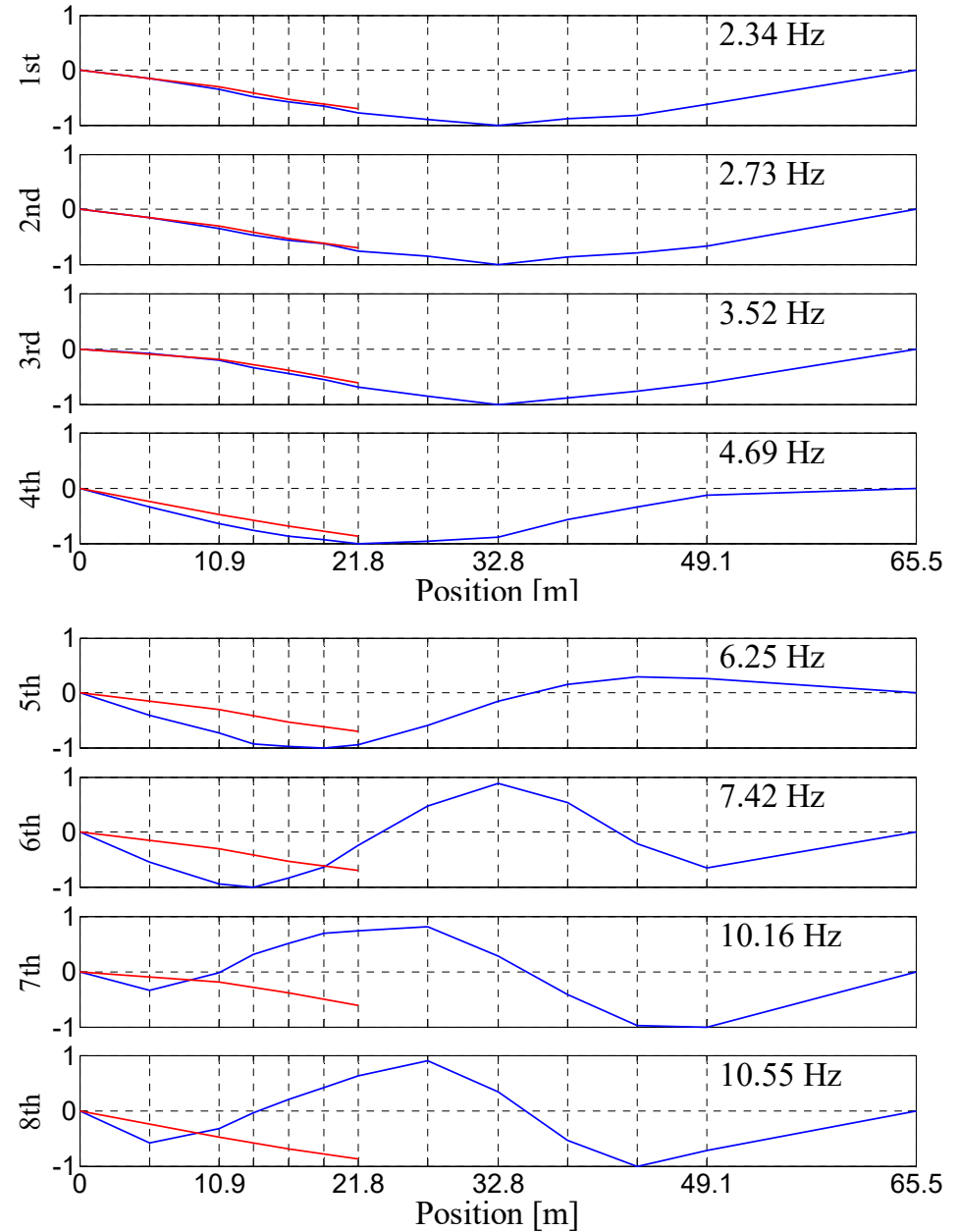
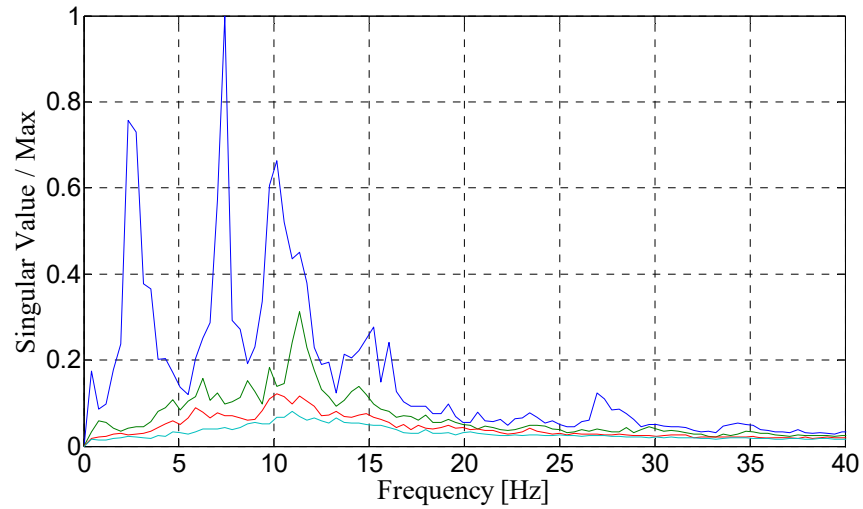
1 INTACT 10 km/h



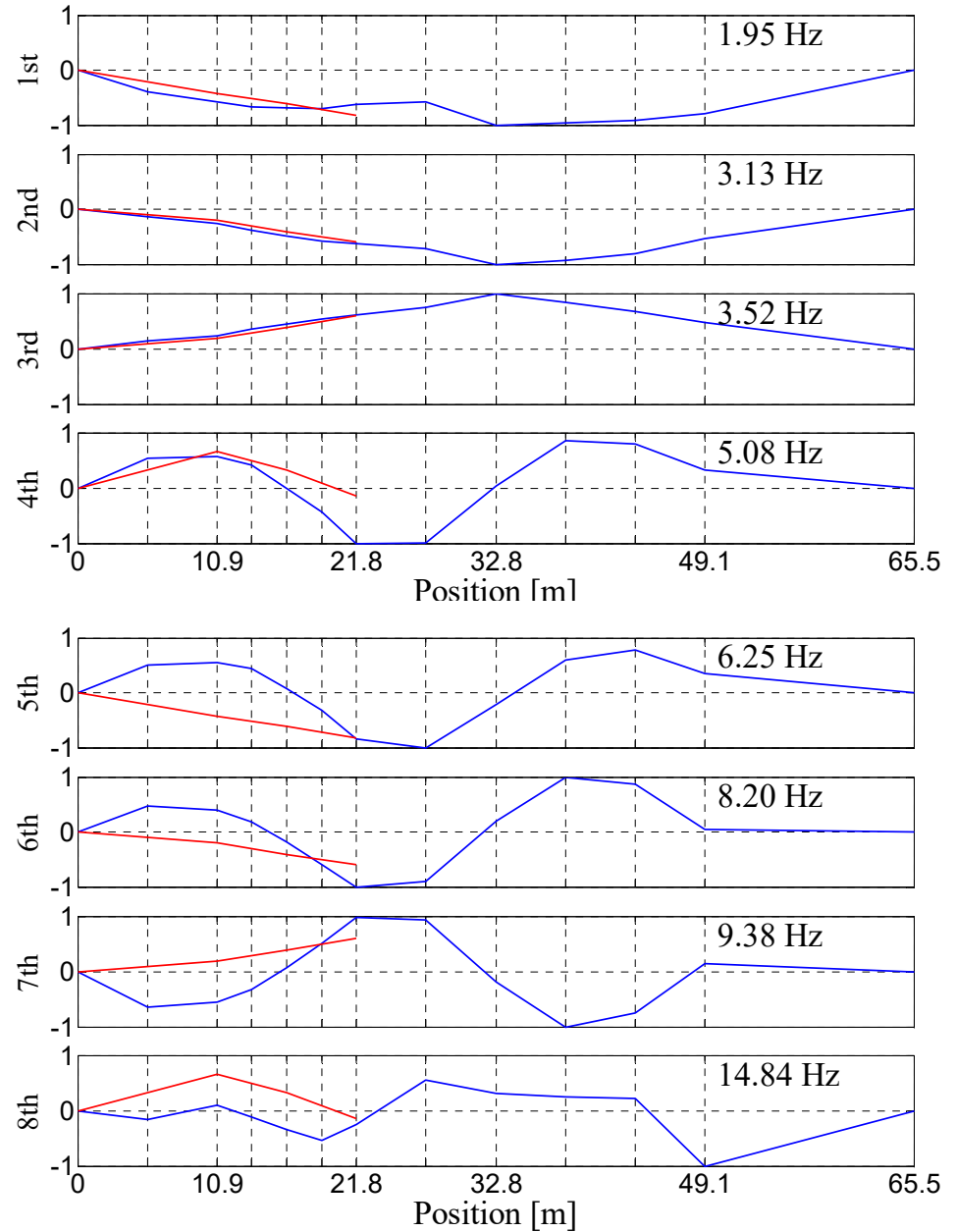
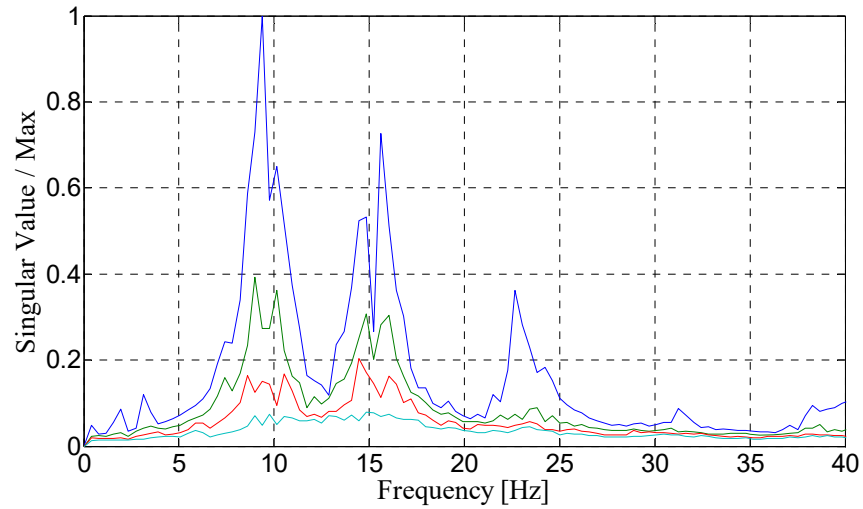
1 INTACT 20 km/h



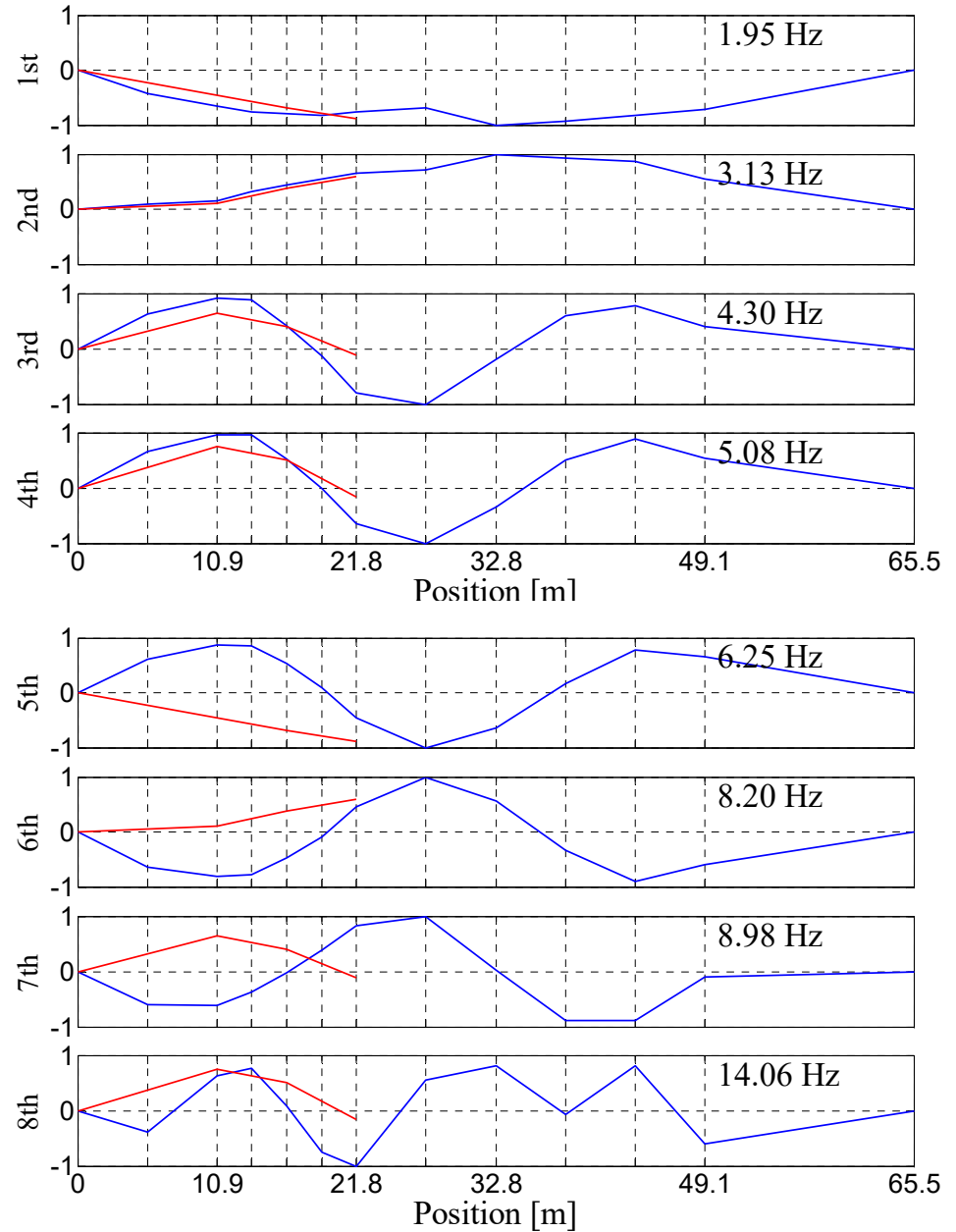
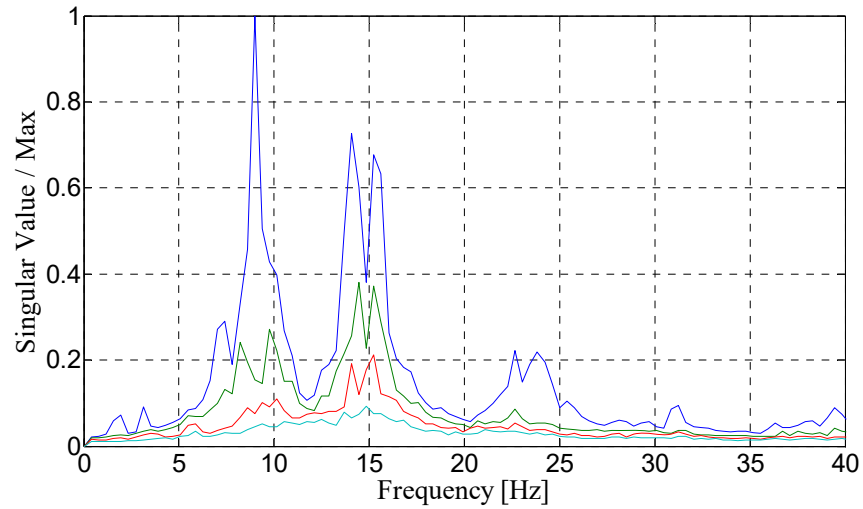
2 INTACT 20 km/h



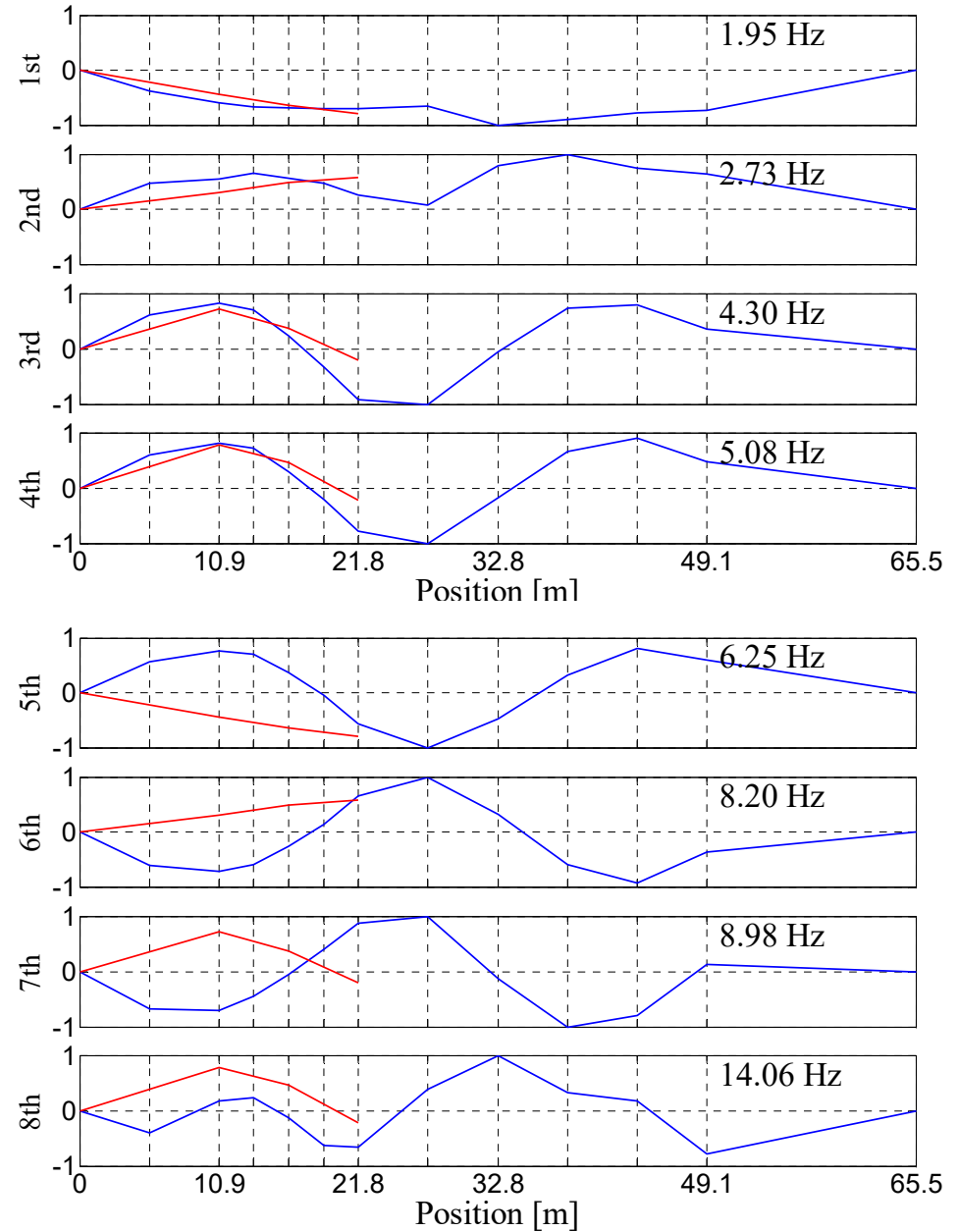
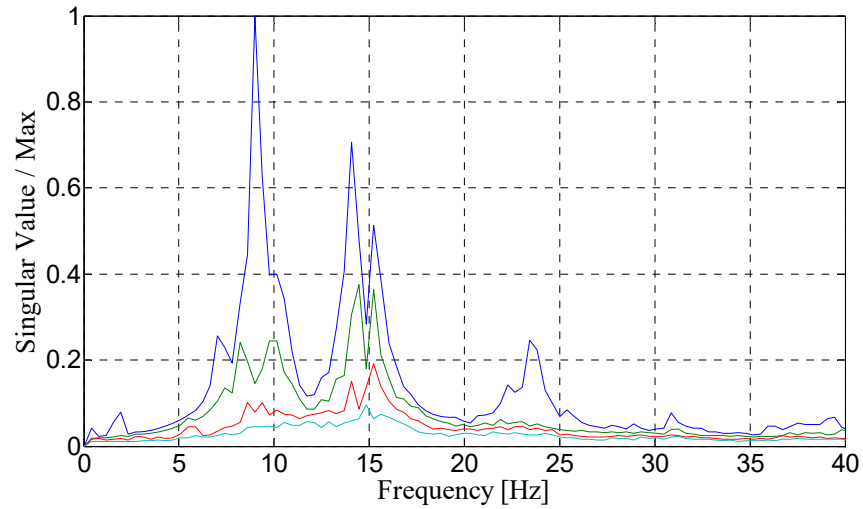
1 INTACT 40 km/h



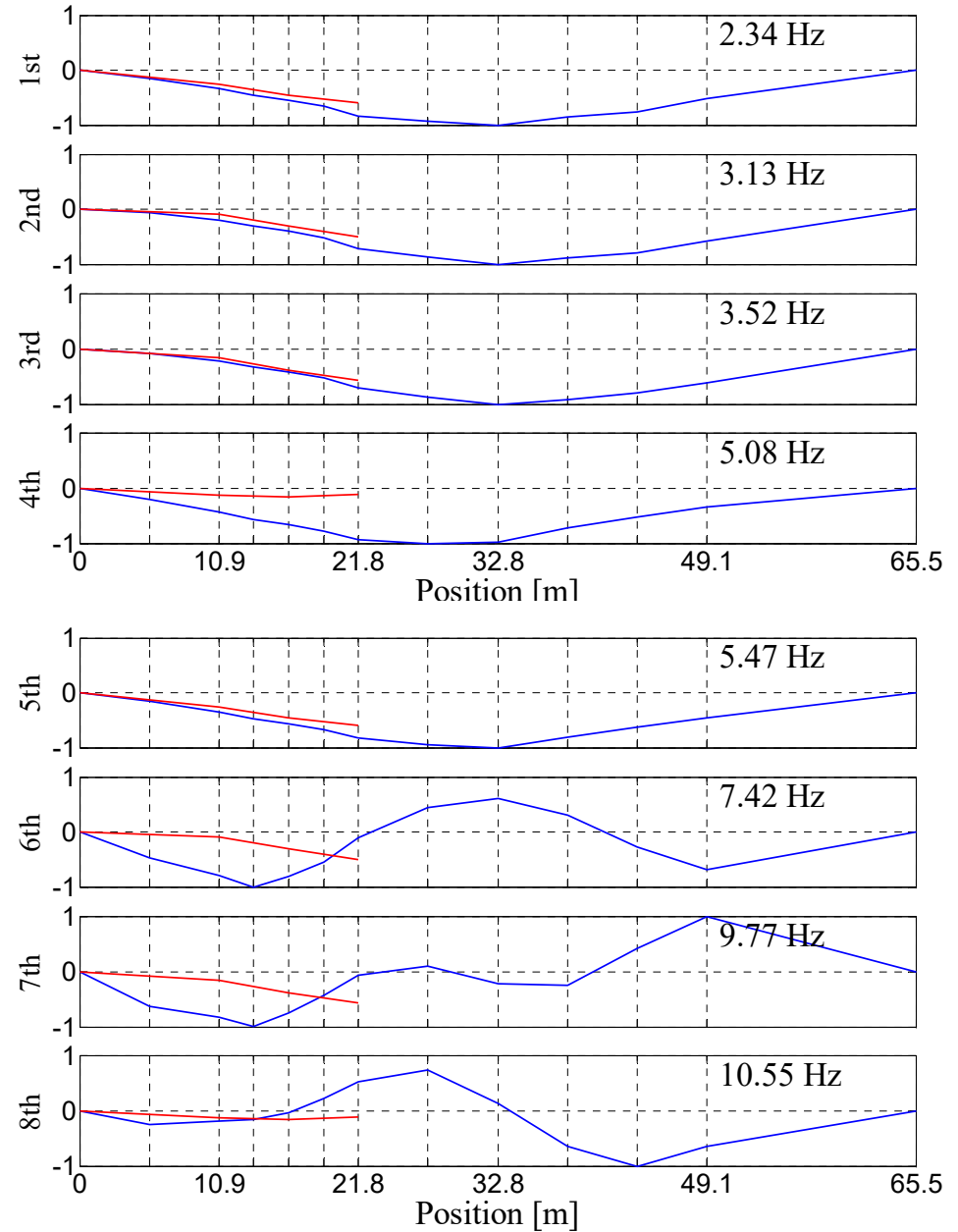
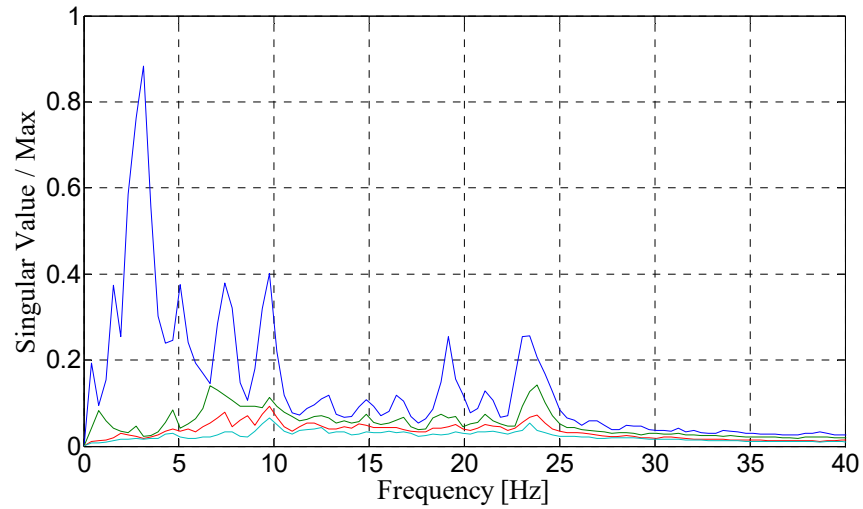
2 INTACT 40 km/h



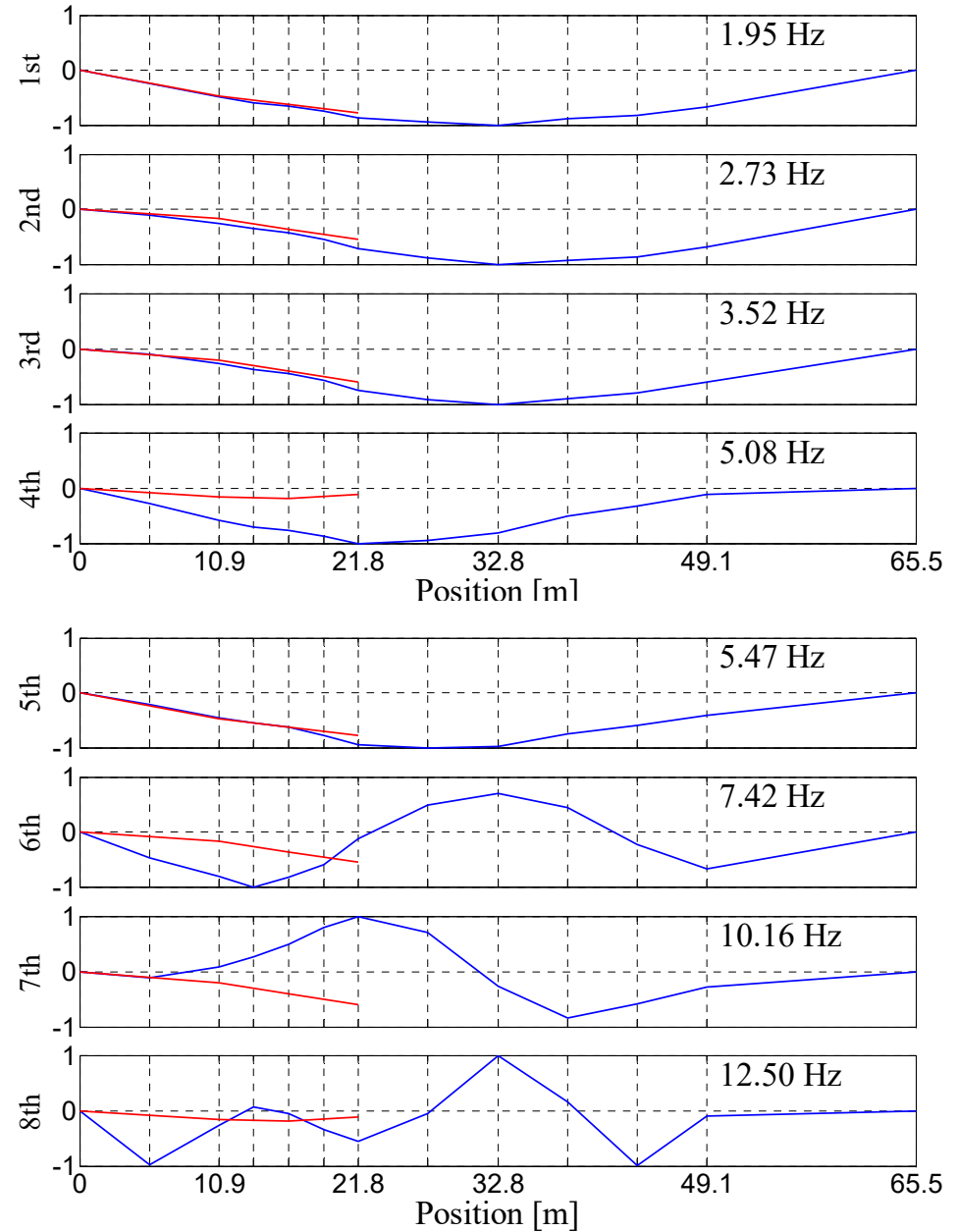
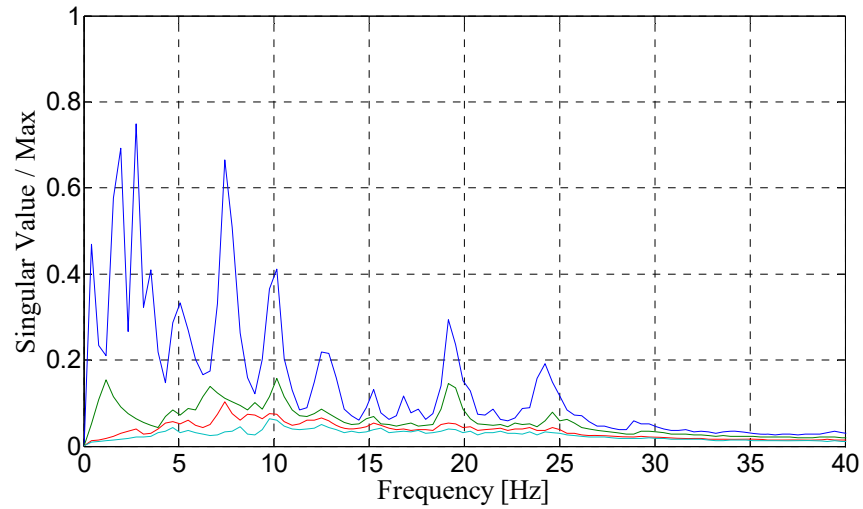
3 INTACT 40 km/h



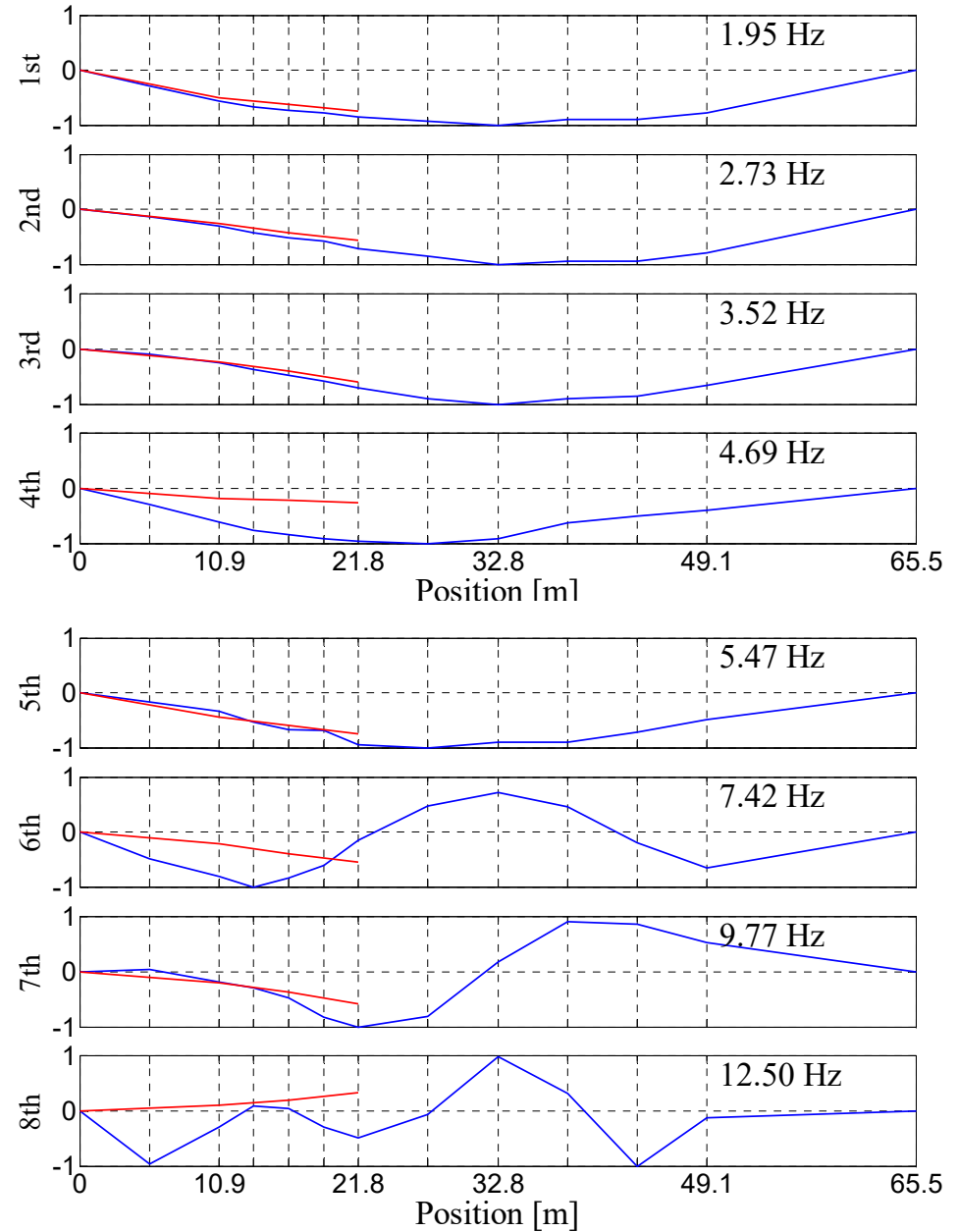
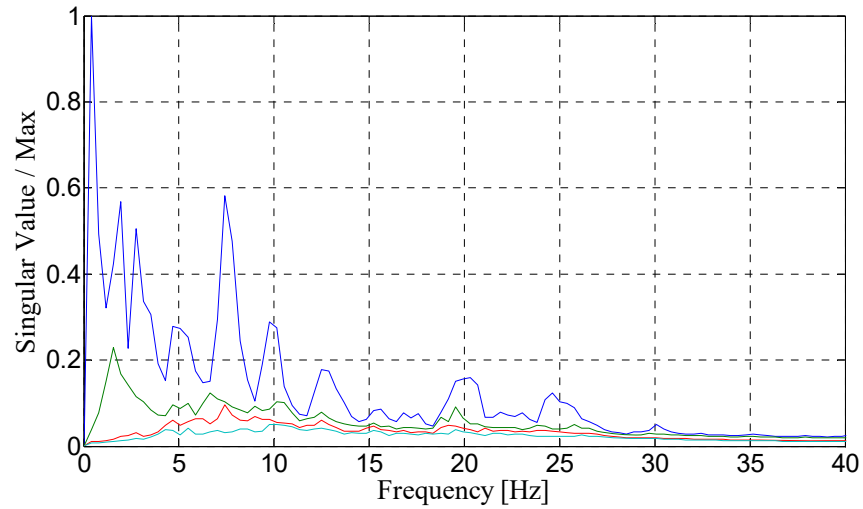
1 DAMAGE 10 km/h



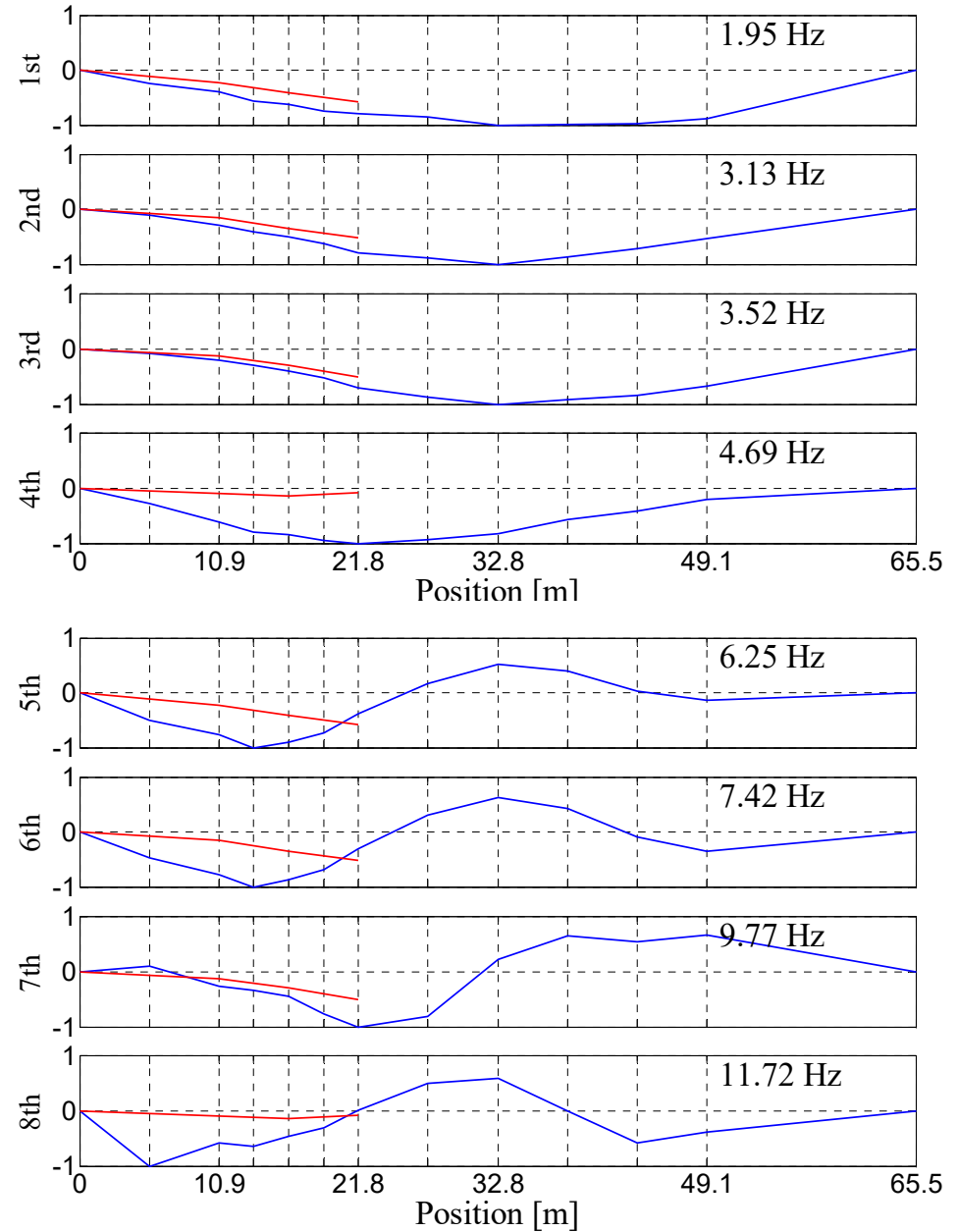
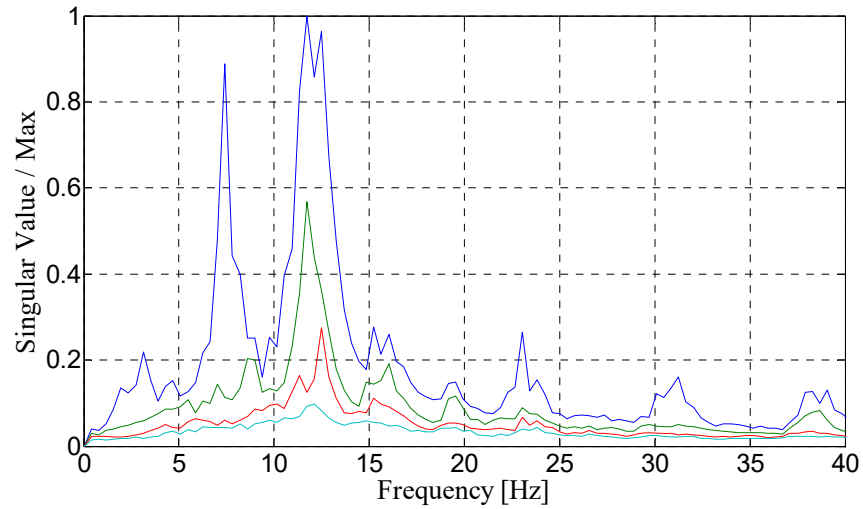
2 DAMAGE 10 km/h



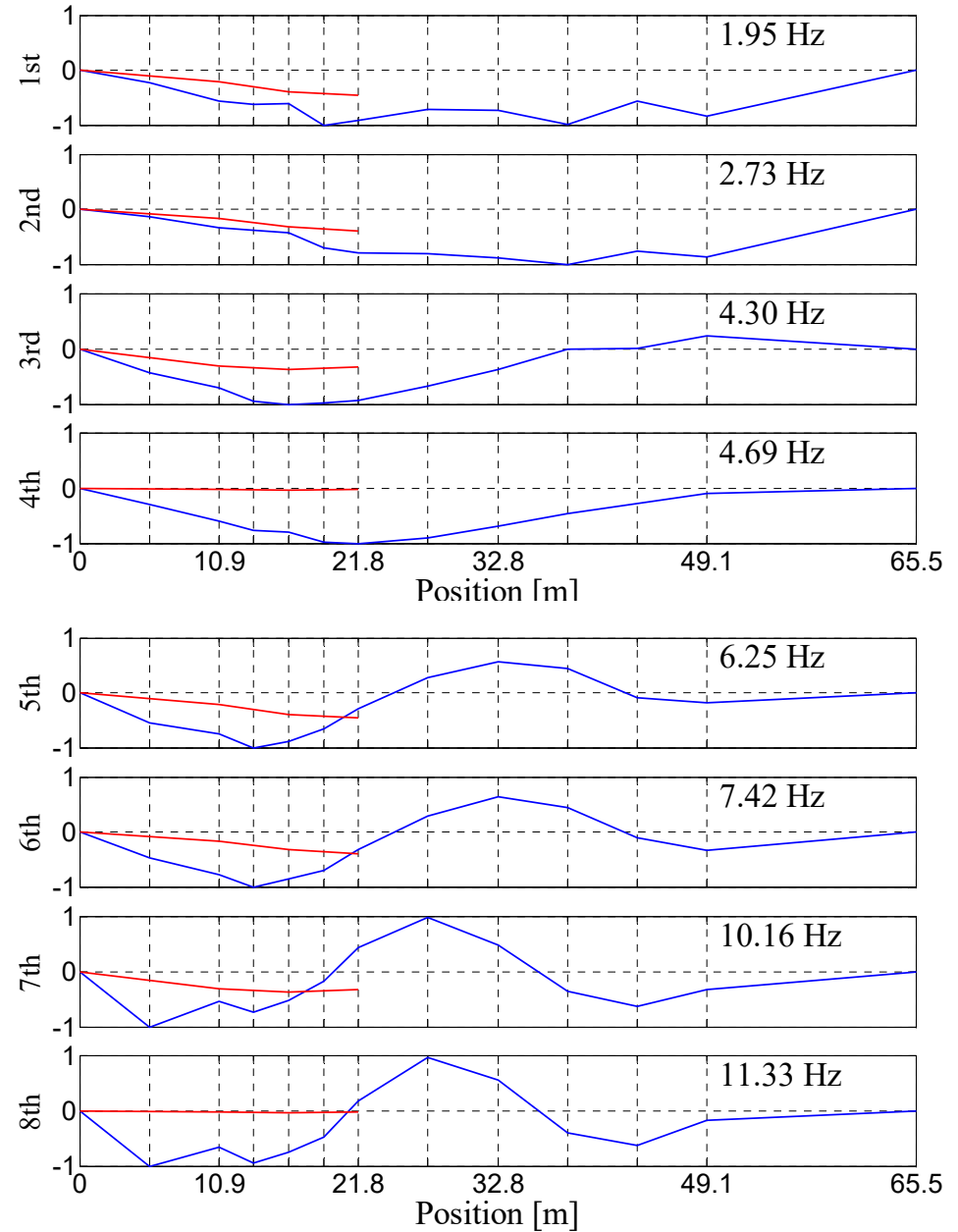
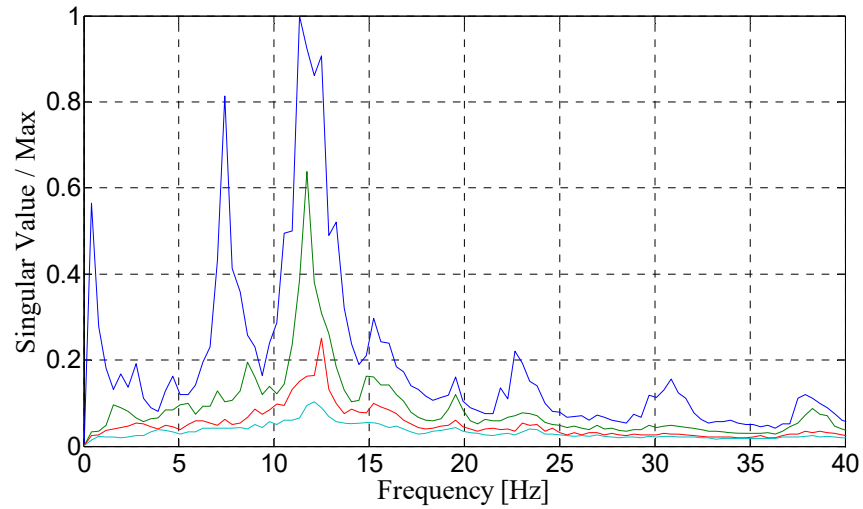
3 DAMAGE 10 km/h



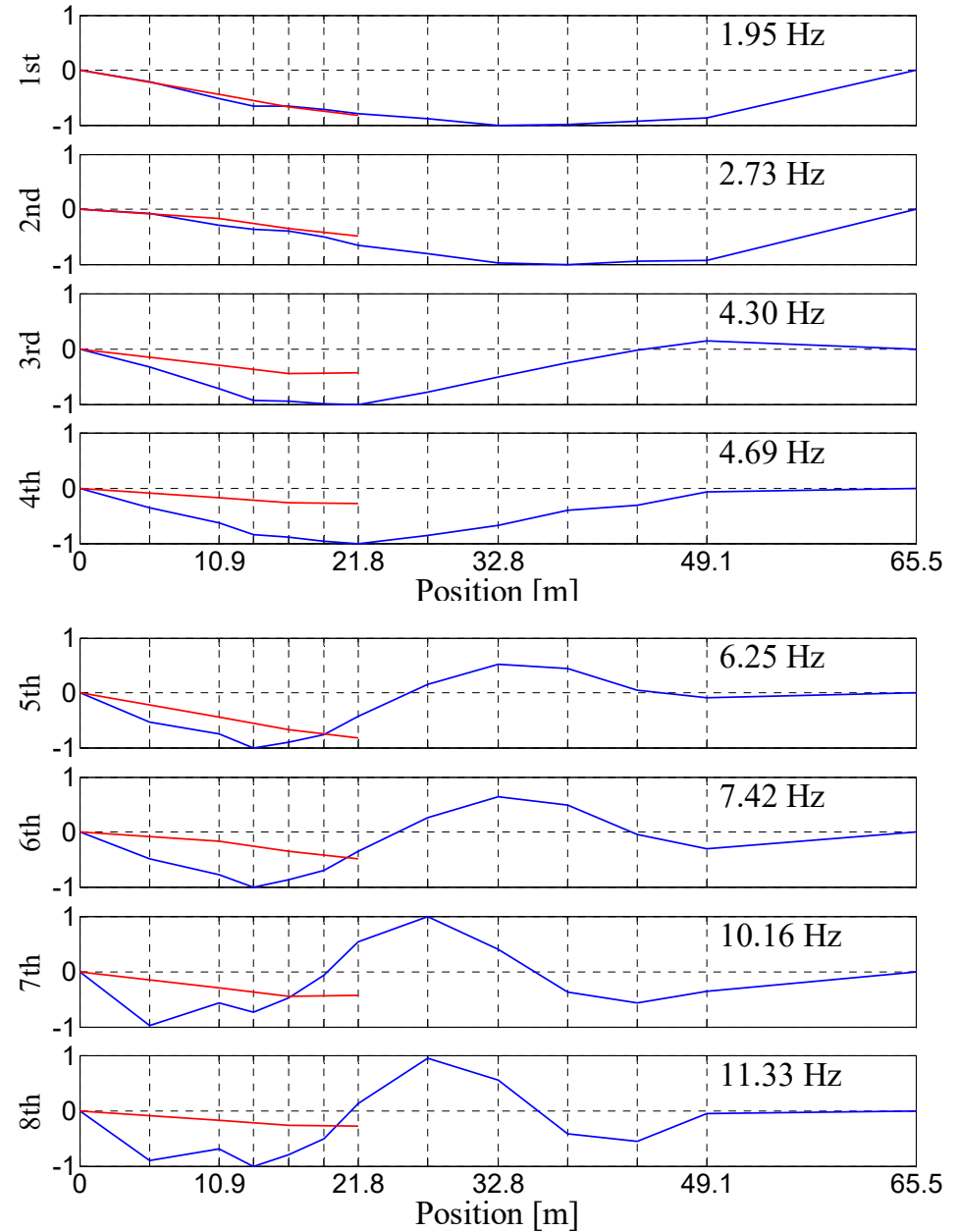
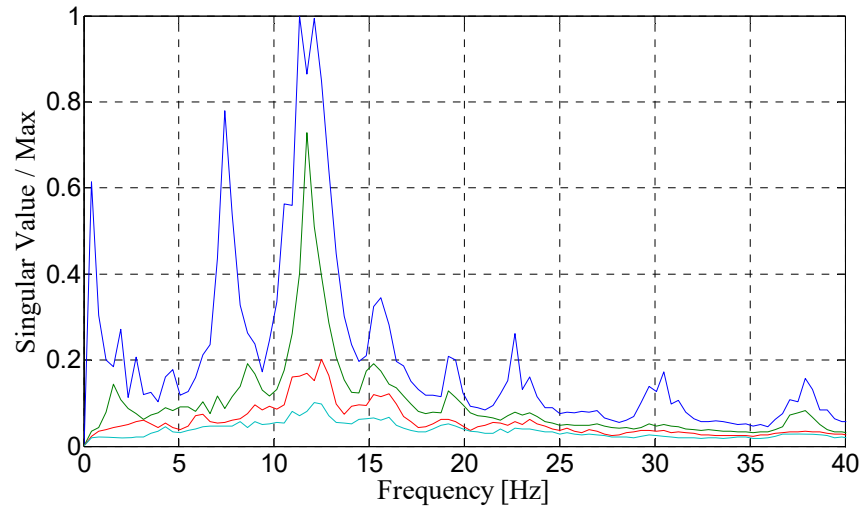
1 DAMAGE 20 km/h



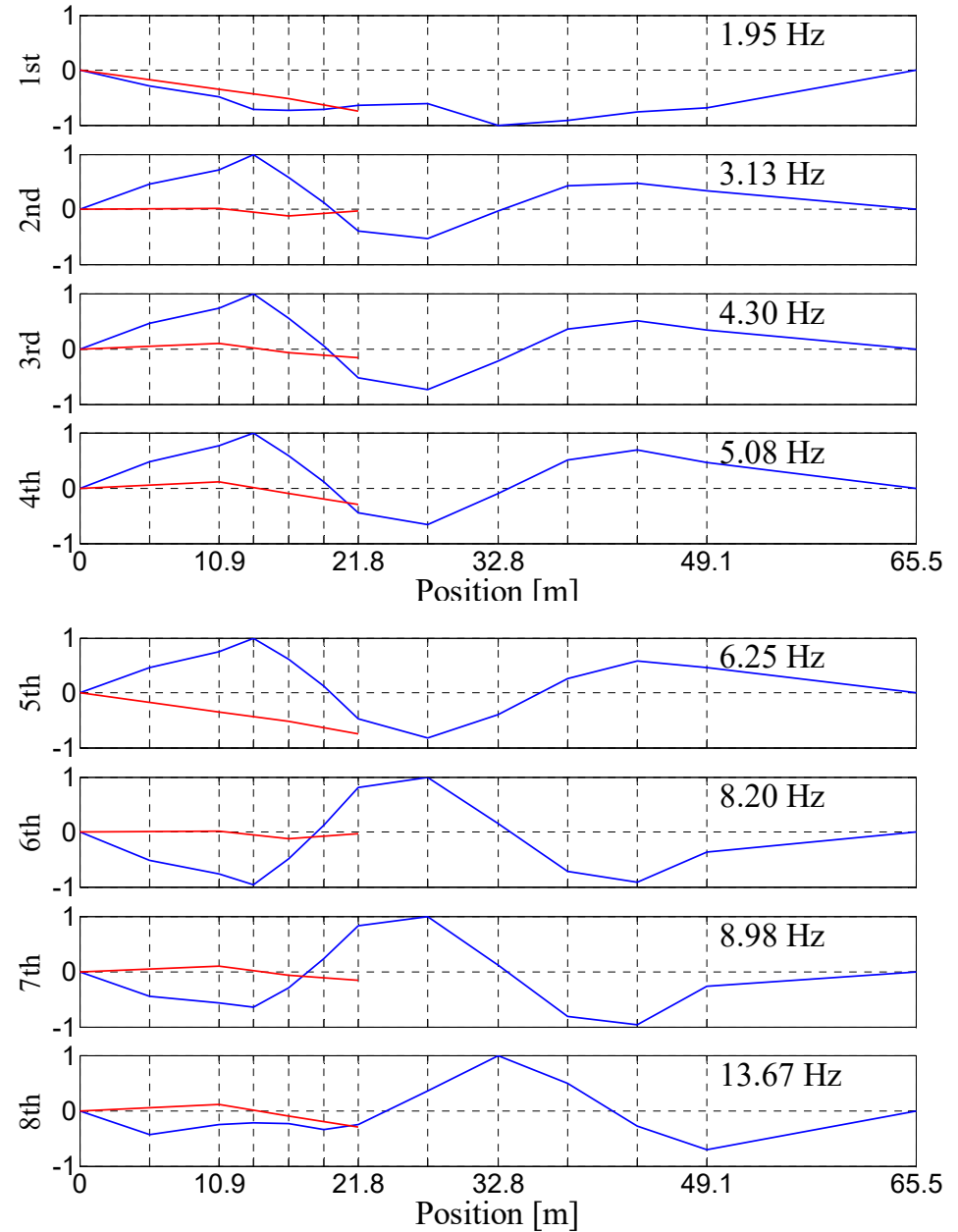
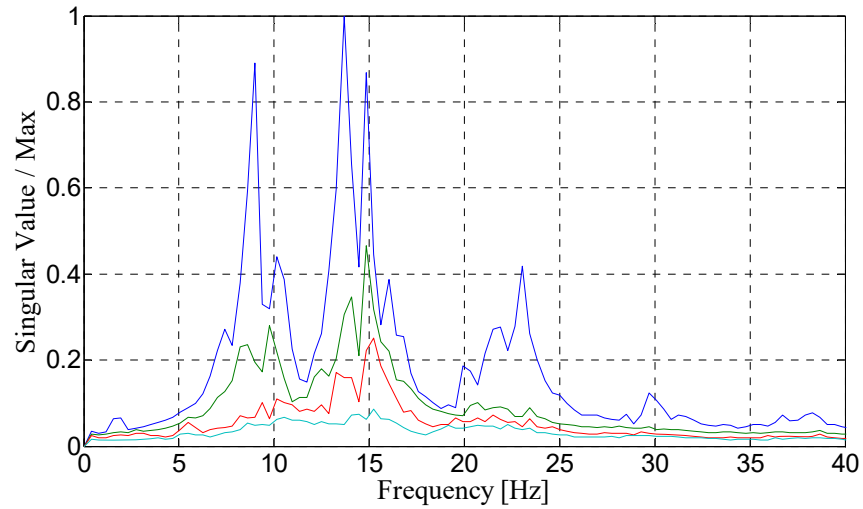
2 DAMAGE 20 km/h



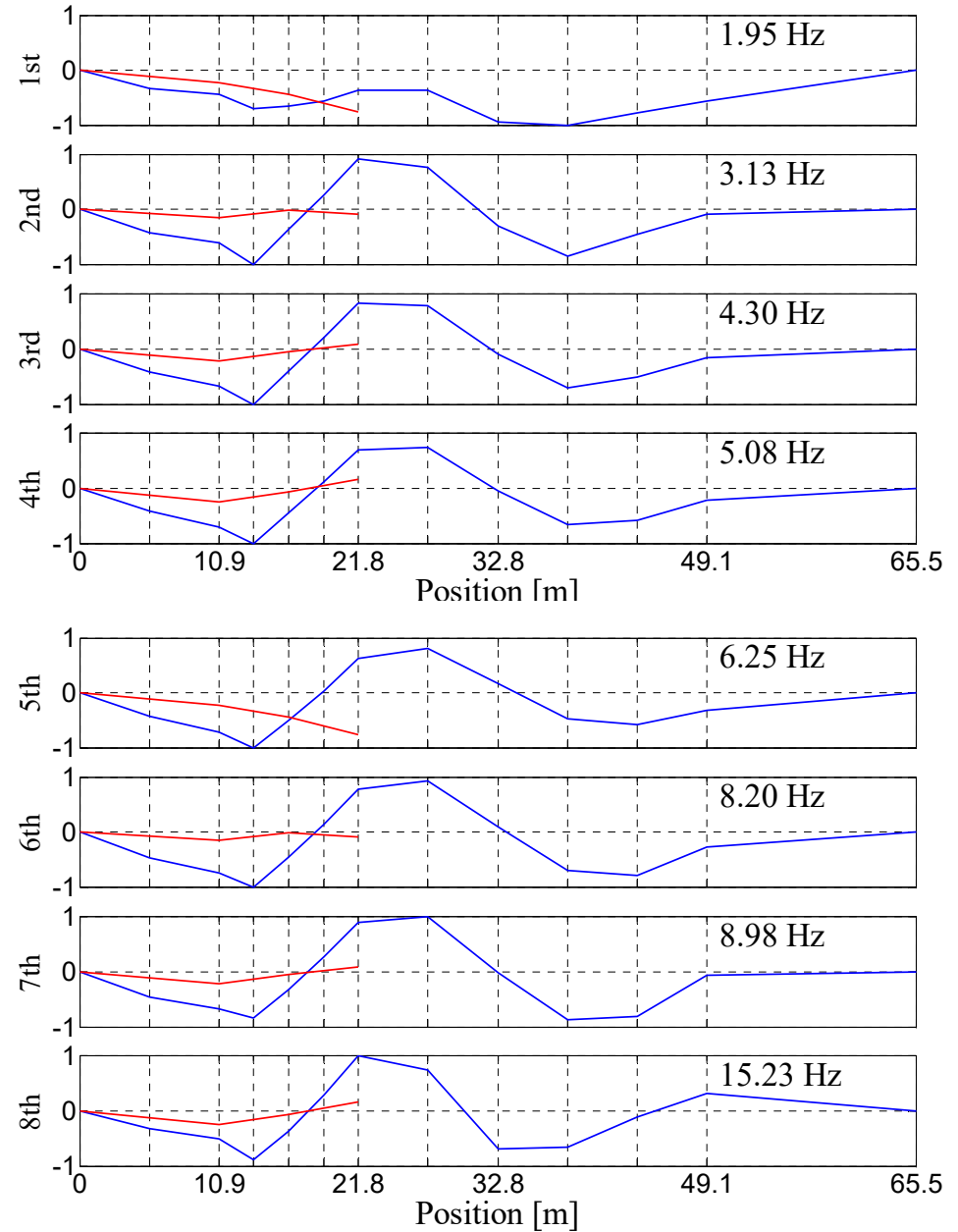
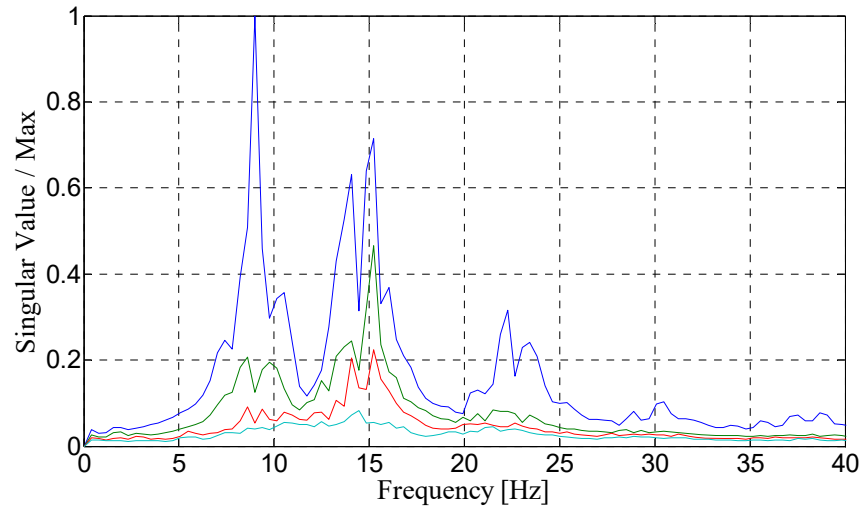
3 DAMAGE 20 km/h



1 DAMAGE 40 km/h



2 DAMAGE 40 km/h



3 DAMAGE 40 km/h

